

AIS Base Station JHF-83



NCX-4283



NTE-183BR

Features

- Complied with IALA A-124 Standard of AIS Service
- Integral structure of VHF/GPS Antenna for NTE-183BR
- Only one coaxial cable connection between NTE 183BR (Out-door equipment) and NCX-4283 (In-door equipment)
- Capable to quick NCX-4283 in standard 19-inch rack by adopting 480mm panel or to use as desk top type
- TCP/IP Multi-Connection by Ethernet PI (Presentation Interface) port
- Fan-less, HDD-less, Non-PC Design
- AIS Base Station and/or Simplex repeater
- Design based on IEC62320-1 ed.1

AIS Base Station JHF-83 System Configuration

AIS Base Station



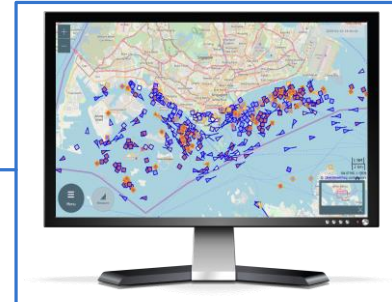
AIS Interface Unit



Power Supply +24VDC



Operation Display



Lan Switch



AIS Base Station JHF-83 Specifications

Item	Specification
Frequencies	156.025 to 162.025 MHz
Frequency accuracy	Within $\pm 3 \times 10^{-6}$
Type of emission	F1D
Type of modulation	GMSK, 9600bps
Antenna impedance	50-ohm unbalance
Output power	12.5W/2W $\pm 20\%$
Transmitter Attack Time	not exceed 1ms (carrier frequency does not exceed ± 1 kHz)
Transmitter Release Time	not exceed 1ms
Sensitivity	20% PER for -107dBm (25kHz) 20% PER for -98dBm (12.5kHz)
Spurious Response Rejection	>70 dB
Co-channel rejection	-10 to 0dB(25kHz) -18 to 0dB(12.5kHz)
Adjacent channel selectivity	>70dB(25kHz) >50dB(12.5kHz)

For further information, contact:



PT Djawa Baru

Jl. Prof Dr. Soepomo, S.H. 45F
Jakarta 12810, Indonesia

Telephone : +62 21 8298401
Mobile (wa) : +62 852 1679 9191
E-mail : support@djawabaru.co.id
Web-site : http://djawabaru.co.id/



Since 1915

Japan Radio Co., Ltd.

URL <http://www.jrc.co.jp/eng/>

Main office : NAKANO CENTRAL PARK EAST
10-1, Nakano 4 Come Nakano-ku,
Tokyo 164-8570, Japan
Telephone : +81-3-6832-0981
Facsimile : +81-3-6832-1842

Overseas Branches : Seattle, Amsterdam, Athens, Manila
Liasion Offices : Taipei, Singapore, Hanoi, New York

ISO9001, ISO14001 Certified